

**UNITED STATES PUBLIC LAND SURVEY CORNER CERTIFICATE FOR**

Land survey monuments situated in Section 18, Township 106 North, Range 39 West, of the Fifth Principal Meridian, Murray County, Minnesota..

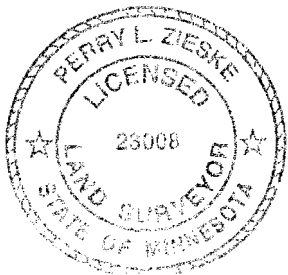
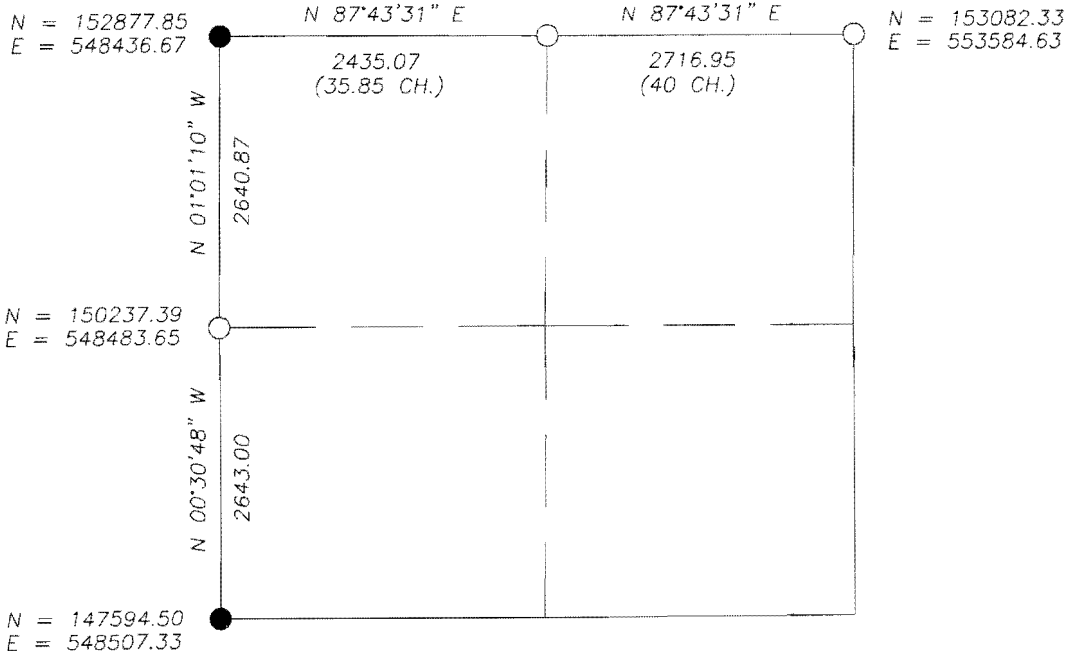
Previously recorded in N/A in County Recorder's Office.

(Show reason for preparing this certificate, the evidence and detailed procedure used in establishing the corner position & monumentation found or placed.)

MONUMENT DESCRIPTION AND REMARKS: On May 5, 2008 we dug with backhoe and searched for North 1/4 corner & West 1/4 corner & NE corner of Section 18; We found no evidence of corner at North 1/4 & NE corner location and Murray County Highway records had no information on corners. We set a 1" Iron Pipe with survey cap 23008 on Township Road intersection at NE corner & set a 1" Iron Pipe with Survey cap at North 1/4 corner on line between NW & NE corners and at proportionate distances from Original Township Plat map; Fence to South is 6' West of North 1/4 corner; We found a 12" X 12" stone at West 1/4 corner 1.5' below surface & set a 1" Iron Pipe with survey cap 23008 over top center of stone. Murray County Highway records indicated a Government mound and stone on May 19, 1898.

MURRAY COUNTY COORDINATES NAD--83 (1996) **PLAN-VIEW**

N = 152974.49  
E = 550869.82



I hereby certify that this land surveying document was prepared and related survey work was performed by me or under my direct supervision and that I am a duly licensed Land Surveyor under the laws of the State of Minnesota.

*Perry L. Zieske* 5-20-08  
Signature Date

Perry Zieske  
License number 23008

Sheet 1 of 1

Corners to be Indexed

Corners	Section	Township	Range
N 1/4	18	106	39
W 1/4	18	106	39
NE	18	106	39